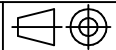
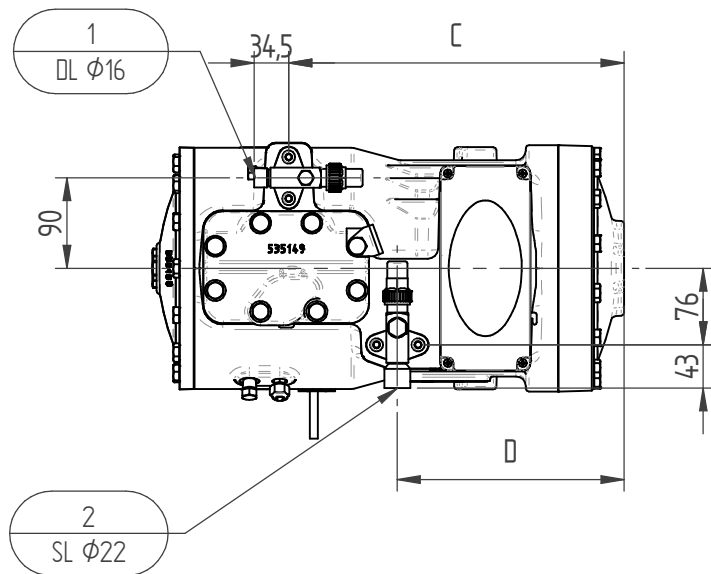
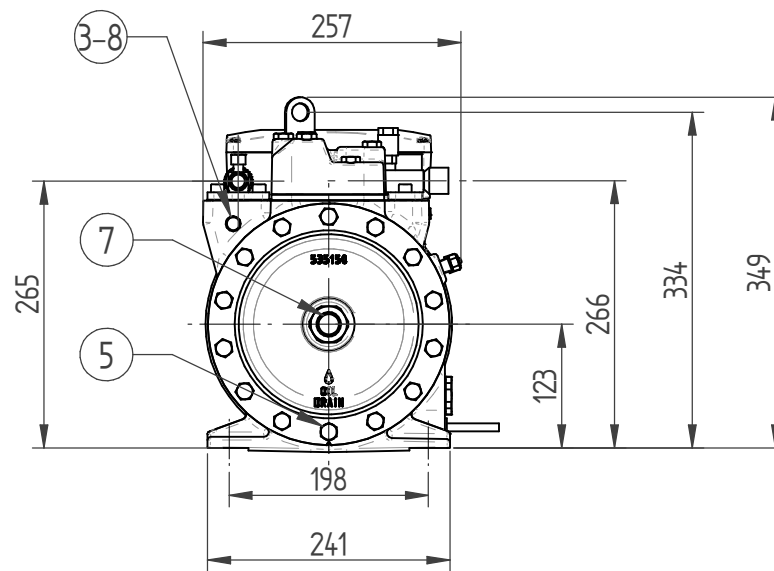
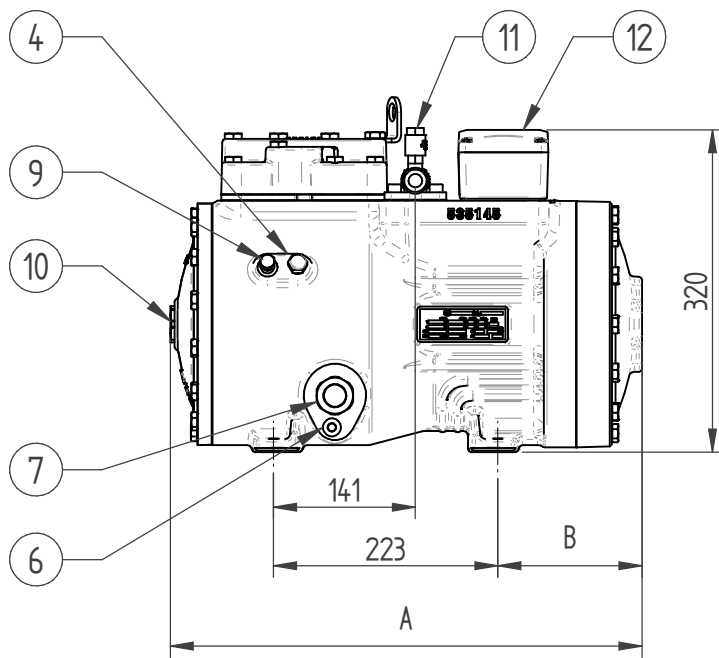


- Key:
- 1) Suction shut-off valve
 - 2) Discharge shut-off valve
 - 3) High pressure 1/8"-27NPT
 - 4) Low pressure 1/8"-27 NPT
 - 5) Oil drain M8x1.5
 - 6) Crankcase heater
 - 7) Oil sight glass 1 1/8"-18UNEF
 - 8) Discharge temperature sensor 1/8"NPT (Opt)
 - 9) Oil charging 1/4"-18 NPT (Optional)
 - 10) Oil Level sensor (optional)
 - 11) Safety Valve 6Mpa
 - 12) Connection Box

Type	A	B	C	D
SPS21-15	373	77	259	160
SPS21-2	373	77	259	160
SPS21-2.5	373	77	259	160
SPS21-3	373	77	259	160
SPS21-3.5	373	77	259	160
SPS21-4.5	384	89	271	172
SPS21-5.5	384	89	271	172
SPS21-6.5	384	89	271	172

Diseg. - Draftman:	A.Tozzo	Sostit. - Substitute:	-
Appr. - Approved:	-	Scala - Scale:	1:4.55
		Descrizione - Description:	SPS21-1.5; SPS21-2; SPS21-2.5; SPS21-3; SPS21-3.5; SPS21-4.5; SPS21-5.5; SPS21-6.5;
		Modello - Model:	Reciprocating Compressor CO2 Sub.
		Rev. - Index	-
<small>ATTENZIONE: il presente disegno è di esclusiva proprietà di SRM ITALIA s.r.l. È fatto divieto di riproduzione o divulgazione anche parziale secondo quanto regolato dalle norme di legge vigenti. ATTENTION: the present drawing is exclusively ownership of SRM ITALIA s.r.l. It is forbidden to reproduce and to disclose, even if partially, the present document in conformity to law regulation in force.</small>		Data - Date	30/09/25
		Tavola - Sheet	1

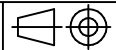


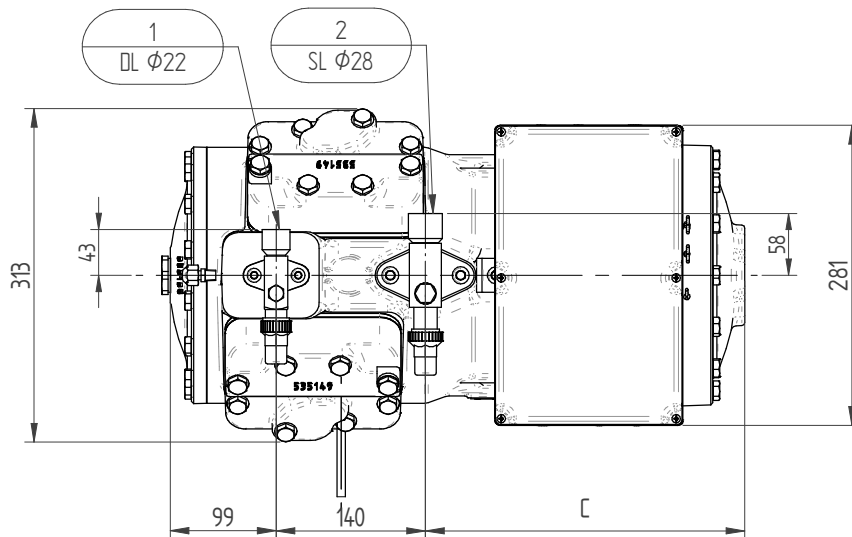
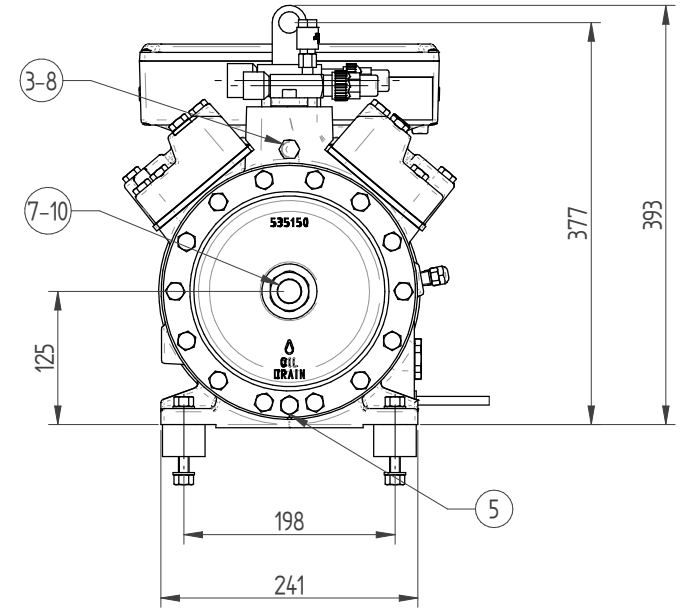
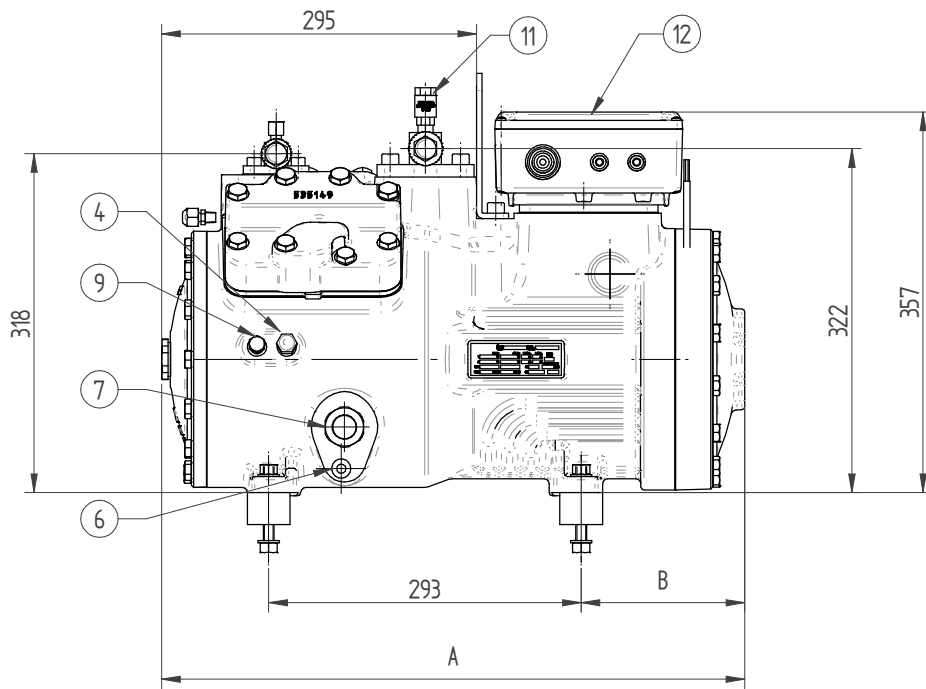


- Key:
- 1) Suction shut-off valve
 - 2) Discharge shut-off valve
 - 3) High pressure 1/8"-27NPT
 - 4) Low pressure 1/8"-27 NPT
 - 5) Oil drain M8x1.5
 - 6) Crankcase heater
 - 7) Oil sight glass 1 1/8"-18UNEF
 - 8) Discharge temperature sensor 1/8"NPT (Opt)
 - 9) Oil charging 1/4"-18 NPT (Optional)
 - 10) Oil Level sensor (optional)
 - 11) Safety Valve 6Mpa
 - 12) Connection Box

Type	A	B	C	D
SPS22-8	439	113	303	195
SPS22-9	439	113	303	195
SPS22-11	469	143	333	225

Diseg. - Draftman:	A.Tozzo	Sostit. - Substitute:	-		
Appr. - Approved:	-	Scala - Scale:	1:5	Peso - Weight:	-
		Descrizione - Description:			
		SPS22-8; SPS22-9; SPS22-11			
SRM Italy s.r.l. Via E. Majorana, 10/12, 36045 Longo (VI) Italy		Modello - Model:	Reciprocating Compressor CO2 Sub.	Progetto - Project:	-
<small>ATTENZIONE: il presente disegno è di esclusiva proprietà di SRM ITALY s.r.l. È fatto divieto di riproduzione o di divulgazione anche parziale secondo quanto regolato dalle norme di legge vigenti. ATTENTION: the present drawing is exclusively ownership of SRM ITALY s.r.l. It is forbidden to reproduce and to disclose, even if partially, the present document in conformity to law regulation in force.</small>		Codice - Code	Rev. - Index	Data - Date	Tavola - Sheet
		-	-	30/09/25	1



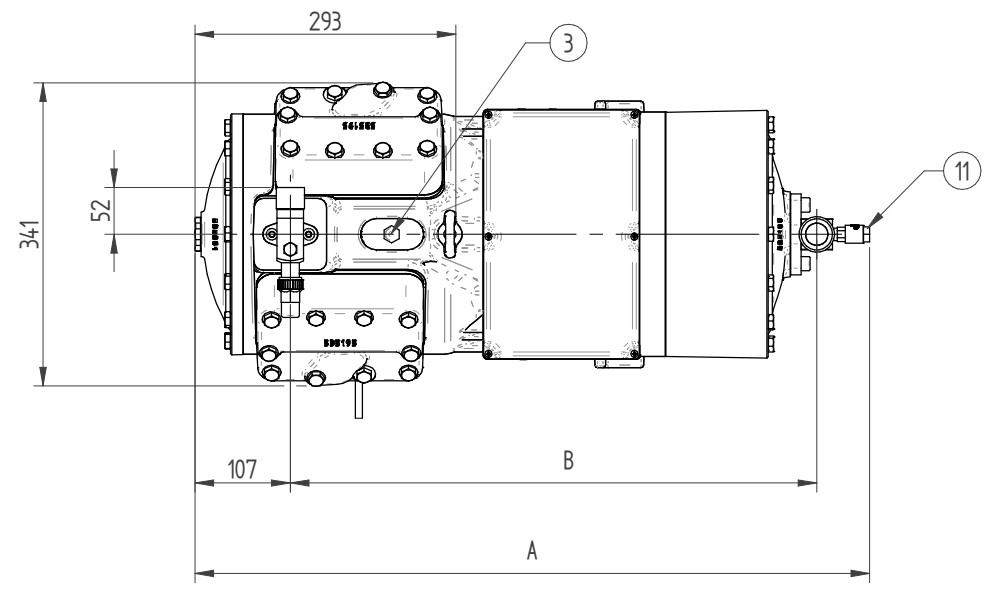
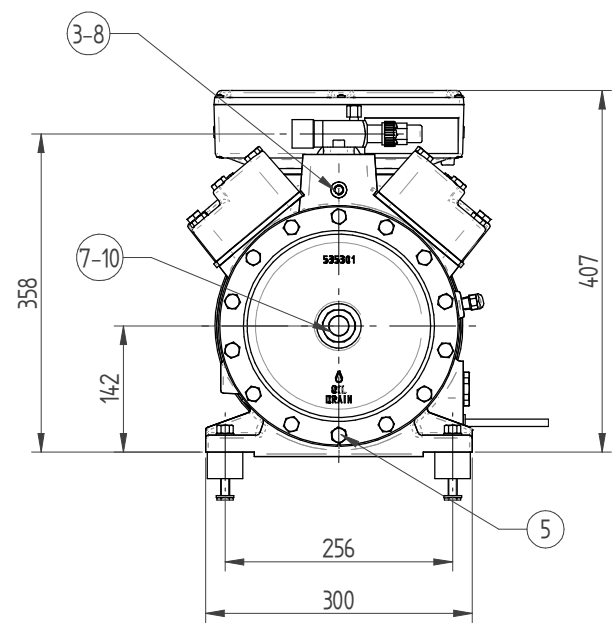
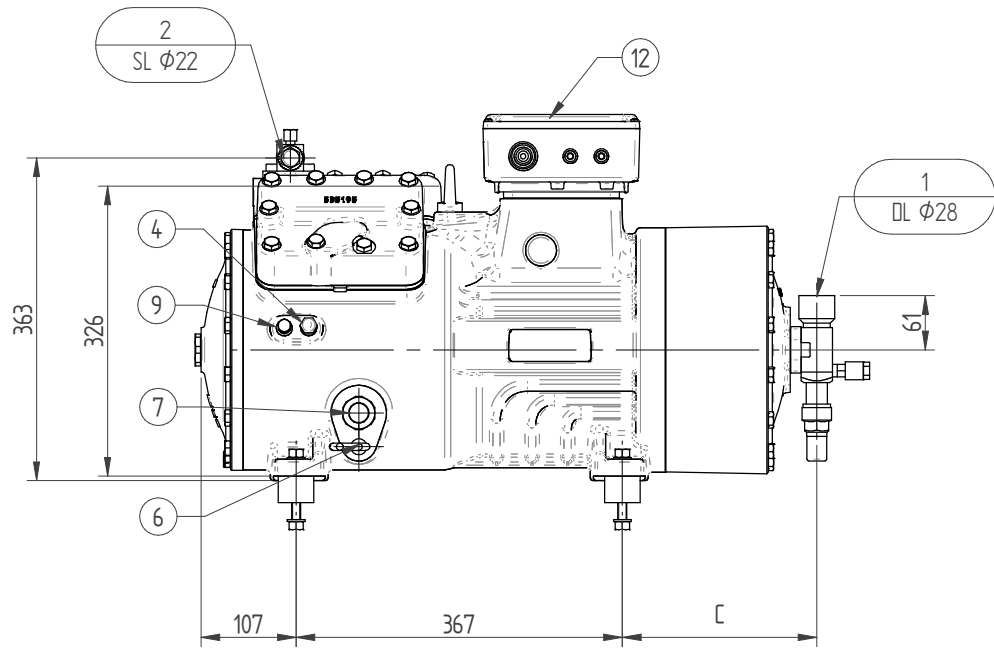


Key:

- 1) Suction shut-off valve
- 2) Discharge shut-off valve
- 3) High pressure 1/8"-27NPT
- 4) Low pressure 1/8"-27 NPT
- 5) Oil drain M8x15
- 6) Crankcase heater
- 7) Oil sight glass 1 1/8"-18UNEF
- 8) Discharge temperature sensor 1/8" NPT (Opt)
- 9) Oil charging 1/4"-18 NPT (Optional)
- 10) Oil level sensor (optional)
- 11) Safety Valve M24-15MPa
- 12) Connection Box

Type	A	B	C
SPS41-13	518	123	269
SPS41-15	518	123	269
SPS41-18	548	153	299
SPS41-22	548	153	299

Disegn. - Draftman: A.Tozzo	Sostit. - Substitute: -	-	
Appr. - Approved: -	Scala - Scale: 1:5	Peso - Weight: -	-
		Descrizione - Description: SPS41-13; SPS41-15; SPS41-18; SPS41-22;	
		Modello - Model: Reciprocating Compressors CO2 Sub.	
Codice - Code: -		Rev. - Index: -	Data - Date: 30/09/25
		Tavola - Sheet: 1	



- Key:
- 1) Suction shut-off valve
 - 2) Discharge shut-off valve
 - 3) High pressure 1/8"-27NPT
 - 4) Low pressure 1/8"-27 NPT
 - 5) Oil drain M8x15
 - 6) Crankcase heater
 - 7) Oil sight glass 1 1/8"-18UNEF
 - 8) Discharge temperature sensor 1/8" NPT (Opt)
 - 9) Oil charging 1/4"-18 NPT (Optional)
 - 10) Oil level sensor (optional)
 - 11) Safety Valve 6MPa
 - 12) Connection Box

Type	A	B	C
SPS42-29	760	534	160
SPS42-35	760	534	160
SPS42-41	830	594	220
SPS42-48	830	594	220

Diseg. - Draftman: A.Tozzo	Sostit. - Substitute: -		
Appr. - Approved: -	Scala - Scale: 1:5	Peso - Weight: -	-
		Descrizione - Description: SPS42-19; SPS42-35; SPS42-41; SPS42-48	
		Modello - Model Reciprocating Compressors CO2 Sub. Progetto - Project: -	
Codice - Code: -		Rev. - Index: -	Data - Date: 30/09/25
			Tavola - Sheet: 1

SPRM Italy s.r.l. Via E. Mattei, 10/12 36045 Lonigo (VI) Italy
 Il disegno è proprietà intellettuale di RefComp s.r.l. e' vietata espressamente la ristampa o l'uso non autorizzato senza permesso scritto dalla RefComp s.r.l. e' vietata espressamente la ristampa o l'uso non autorizzato senza permesso scritto dalla RefComp s.r.l. e' vietata espressamente la ristampa o l'uso non autorizzato senza permesso scritto dalla RefComp s.r.l. e' vietata espressamente la ristampa o l'uso non autorizzato senza permesso scritto dalla RefComp s.r.l.